

DOUBLE TREE PLAT NO. 3, A P.U.D.

" A PLAT OF PHASE 1F "
 BEING A PARCEL OF LAND LYING IN
 SECTION 1, TOWNSHIP 39 SOUTH, RANGE 41 EAST,
 MARTIN COUNTY, FLORIDA.

CLERK'S RECORDING CERTIFICATE

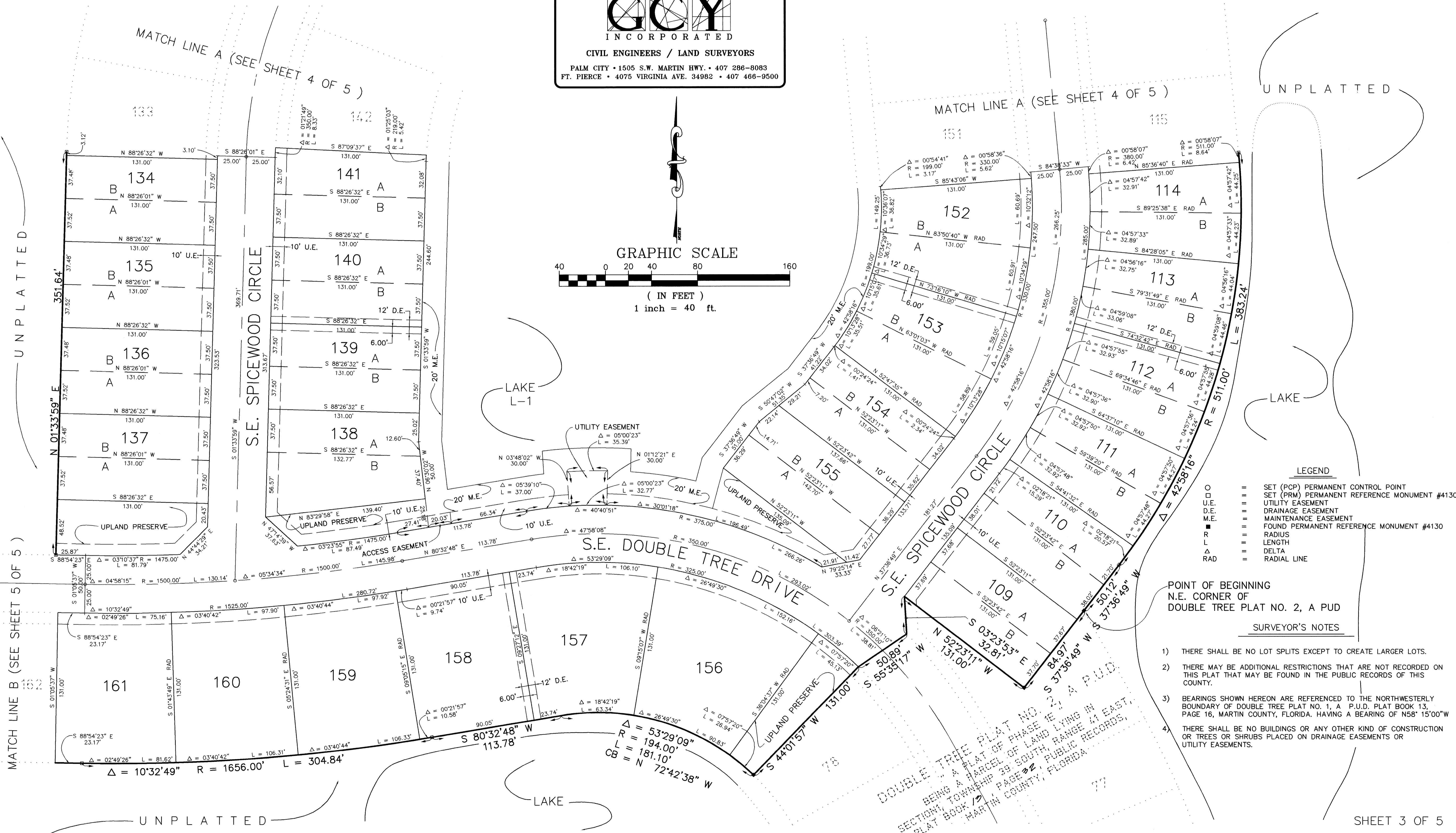
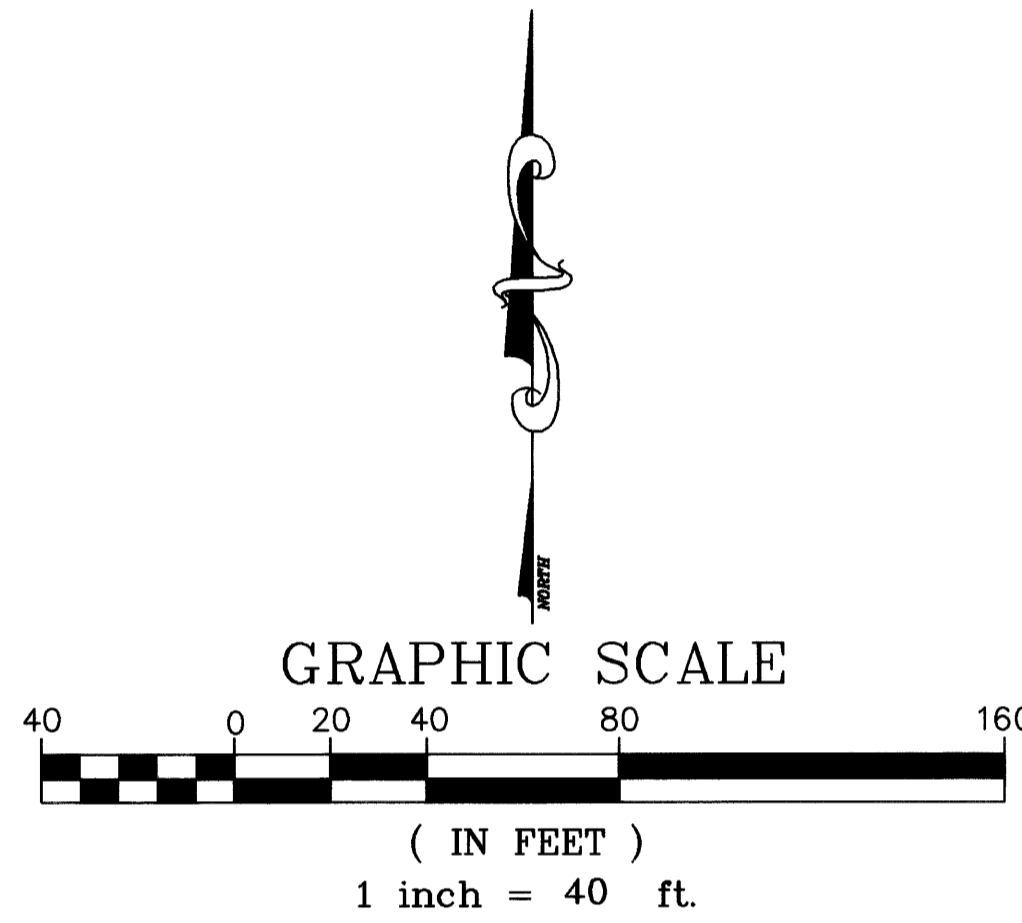
I, MARSHA STILLER, CLERK OF THE CIRCUIT COURT OF MARTIN COUNTY, FLORIDA, HEREBY CERTIFY THAT THIS PLAT WAS FILED FOR RECORD IN PLAT BOOK 13, PAGE 34, MARTIN COUNTY, FLORIDA, PUBLIC RECORDS THIS 1 DAY OF September, 1993.

MARSHA STILLER, CLERK OF THE CIRCUIT COURT
 MARTIN COUNTY, FLORIDA.
 FILE NUMBER 1017201, BY Deborah Langston
 DEPUTY CLERK

1-39-41-001-000-0000.0

SUBDIVISION PARCEL CONTROL NO.

GCY
 INCORPORATED
 CIVIL ENGINEERS / LAND SURVEYORS
 PALM CITY • 1505 S.W. MARTIN HWY. • 407 286-8083
 FT. PIERCE • 4075 VIRGINIA AVE. 34982 • 407 466-9500



LEGEND

○	SET (PCP) PERMANENT CONTROL POINT
□	SET (PRM) PERMANENT REFERENCE MONUMENT #4130
U.E.	UTILITY EASEMENT
D.E.	DRAINAGE EASEMENT
M.E.	MAINTENANCE EASEMENT
■	FOUND PERMANENT REFERENCE MONUMENT #4130
R	RADIUS
L	LENGTH
Δ	DELTA
RAD	RADIAL LINE

POINT OF BEGINNING
 N.E. CORNER OF
 DOUBLE TREE PLAT NO. 2, A PUD

SURVEYOR'S NOTES

- 1) THERE SHALL BE NO LOT SPLITS EXCEPT TO CREATE LARGER LOTS.
- 2) THERE MAY BE ADDITIONAL RESTRICTIONS THAT ARE NOT RECORDED ON THIS PLAT THAT MAY BE FOUND IN THE PUBLIC RECORDS OF THIS COUNTY.
- 3) BEARINGS SHOWN HEREON ARE REFERENCED TO THE NORTHWESTERLY BOUNDARY OF DOUBLE TREE PLAT NO. 1, A P.U.D. PLAT BOOK 13, PAGE 16, MARTIN COUNTY, FLORIDA. HAVING A BEARING OF N58° 15'00" W.
- 4) THERE SHALL BE NO BUILDINGS OR ANY OTHER KIND OF CONSTRUCTION OR TREES OR SHRUBS PLACED ON DRAINAGE EASEMENTS OR UTILITY EASEMENTS.

DOUBLE TREE PLAT NO. 3, A P.U.D.
 BEING A PLAT OF PHASE 1F
 BEING A PARCEL OF LAND LYING IN
 SECTION 1, TOWNSHIP 39 SOUTH, RANGE 41 EAST,
 PLAT BOOK 13, PAGE 34, PUBLIC RECORDS,
 MARTIN COUNTY, FLORIDA